

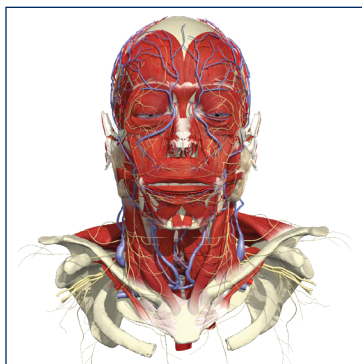


OvidSP

Search Without  
Boundaries.

# Primal Pictures on OvidSP

- Provide seamless electronic access to detailed three-dimensional interactive anatomical models of the human body
- Provide a convenient and cost-effective “virtual cadaver” to everyone from pre-medical students to nurse practitioners to surgeons
- Choose from a flexible variety of modules and packages depending on your institutional needs and budget
- Complement textbook, video, and classroom-based learning with cutting-edge multimedia imagery
- Ask your Ovid Account Representative for a demonstration!



## Interactive 3D Animated Human Anatomy Modules for Clinical Practice, Research, and Teaching

Accessible via the robust, easy-to-use OvidSP platform, Primal Pictures on OvidSP is the ultimate online anatomy reference— a comprehensive selection of dynamic, interactive modules featuring more than 6,500 highly accurate, three-dimensional anatomy models. Modules focus on individual organs, regions of the body, or anatomical systems.

Whether they're in clinical practice, rehabilitation, education, or research, whether they're generalists or specialists, users have seamless access to three-dimensional animations that illustrate accurate anatomical function, biomechanics, and movement, as well as treatments and surgical procedures. Depending on the specific module, they can:

- Peel away layers, rotate anatomical models 360 degrees, and reconstruct layers back to their original structure
- Demonstrate muscle function in 3D with interactive animations that illustrate the interaction of muscles, ligaments, and bones
- Get a built-in study guide as well as self-assessment quizzes to support and reinforce learning
- Illustrate clinical relevancy of anatomy with textual descriptions by leading specialists, as well as dissection and pathology slides
- Compare 3D images to MRI slices to aid in diagnosis and management of injuries with correlating scans
- Review clinical videos to gain a better understanding of procedures and treatments
- Export images, text, movies, and animations to use in presentations and patient handouts
- Easily link between images, animations, movie clips, slides, and accompanying textual descriptions

*Ovid offers flexibility when it comes to your choice of Primal Pictures Resources. Ask your Ovid Account Representative for a complete list of offerings on Ovid.*



## Ovid Worldwide Headquarters

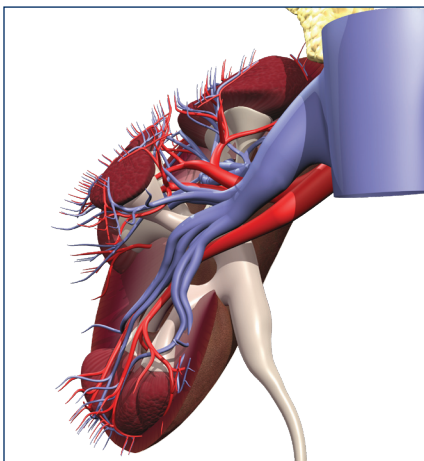
333 7th Avenue  
New York, NY 10001  
(646) 674-6300  
(800) 343-0064  
Email: [sales@ovid.com](mailto:sales@ovid.com)

Additional sales offices are located in the following cities and countries:

Amsterdam, The Netherlands  
Beijing, China  
Berlin, Germany  
Bologna, Italy  
Hong Kong  
Kuala Lumpur, Malaysia  
London, UK  
Madrid, Spain  
New Delhi, India  
Norwood, MA, USA  
Paris, France  
Sandy, UT, USA  
Sofia, Bulgaria  
Stockholm, Sweden  
Sydney, Australia  
Tokyo, Japan  
Villa Alemana, Chile  
Warsaw, Poland

For complete contact and location information, visit

[www.ovid.com/contact](http://www.ovid.com/contact)



## Who Uses Primal Pictures on OvidSP?

From surgeons, critical care nurses and physical therapists to premedical students, faculty, and postdoctoral researchers, Primal Pictures is ideal for anyone working in the following fields:

- Acupuncture
- Allied Health
- Anatomy
- Chiropractic
- Dentistry
- Exercise Science
- Gynecology
- Hand Therapy
- Kinesiology
- Massage Therapy
- Medicine
- Neuroanatomy
- Nursing
- Obstetrics
- Occupational Therapy
- Orthopedics
- Osteopathic Medicine
- Pathology
- Pediatrics
- Physical Therapy
- Physician Assistantship
- Physiology
- Radiology
- Rehabilitation Science
- Sports Medicine
- Sports Sciences
- Surgery

## More information about Primal Pictures

Established in 1991, Primal Pictures created the first medically accurate 3D model of the human anatomy in 2003. Since 1996 Primal Pictures has been honored with numerous BMA (British Medical Association) Book Awards, including 2007's first prize in the electronic books category for 3D Head and Neck Anatomy with Special Senses and Neuroanatomy. More than 500,000 students, practitioners, and researchers currently use Primal Pictures for anatomy training and reference.

## How are the realistic images created?

The images are not medical illustrations or artist impressions. They're derived from actual medical scan data interpreted by a team of staff anatomists and constructed using advanced imaging by an in-house team of graphics specialists.

## Award-winning, 24/7 customer support

Ovid is dedicated to the highest level of customer satisfaction. Our customer service and technical support—certified by a leading source for customer relationship management—teams can answer questions on any Primal Pictures module. Ask your Ovid Account Representative about instructor-led online training session and self-running demos.

*Ask your Ovid Account Representative for a complete list of Primal Pictures offerings on Ovid.*